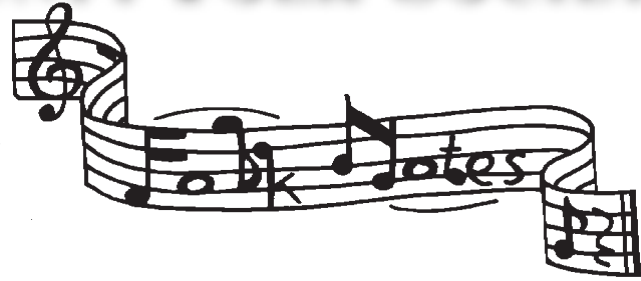


# THE SONOMA COUNTY FOLK SOCIETY

January -  
February 2011  
Volume 16 No. 1



<http://www.socofoso.com>



## 11th ANNUAL SONOMA COUNTY BLUEGRASS & FOLK FESTIVAL

SAT. • MARCH 12, 2011 • 1PM to 8PM  
Sebastopol Community Center • 390 Morris St.

**General Admission**  
\$28 adv. \$33 door  
Children 11 years old and under are free  
when accompanied by an adult admission.

**SOCOFOSO/CBA Members**  
\$25 adv. \$30 door  
present current membership card



TICKETS AVAILABLE JANUARY 1: <http://www.cbaontheweb.org>

For tickets by mail, send a self addressed stamped envelope to  
SCB&FF, 3980 Monika Ct., Sebastopol, Ca. 95472

TICKETS ALSO AT : Peoples Music, Sebastopol Last Record Store, Santa Rosa

For further information :

707-829-8012 • 707-542-3798

[www.socofoso.com](http://www.socofoso.com) • [hogiemoon@comcast.net](mailto:hogiemoon@comcast.net)

The 11th annual Sonoma County Bluegrass & Folk Festival will be held Saturday March 12, 2011 at the Sebastopol Community Cultural Center, 390 Morris Street.

Doors open at noon. The show begins at 1:00 and finishes at 8pm.

The Sonoma County Folk Society and the California Bluegrass Association have collaborated once again to bring you a fine slate of performers.

This year's line up features Jim Hurst, The Stairwell Sisters, Black Crown String Band, Euphonia, Sarah Elizabeth Campbell & Nina Gerber and Suzie Glaze & High Lonesome

Tickets may be obtained at Peoples Music in Sebastopol and the Last Record Store in Santa Rosa beginning January 1, 2011. Also on line at [www.cbaontheweb.org](http://www.cbaontheweb.org). General admission: \$28 advance - \$33 at the door. For members of the SOCOFOSO and the CBA, tickets are \$25 advance and \$30 at the door.

## “ Woody Guthrie’s American Song ”

### Songs and writings by Woody Guthrie

A musical conceived and adapted by Peter Glazer  
This stirring musical journey follows legendary singer-songwriter Woody Guthrie on the cross country travels that inspired his songs about American life and events during the Great Depression and Dust Bowl era. Featuring over two dozen of Woody Guthrie’s most famous ballads and folk songs including “Bound for Glory” and “This Land Is Your Land.”

WHEN: Dec. 31, 2010 to Jan, 23, 2011

WHERE: Cinnabar Theater, Petaluma

For details: 707-763-8920



## What's Inside

Our 11th Annual Folk and Bluegrass Festival .....	1
Notes from the President. . . . .	2
The Hootenanny.....	2
Cloverdale Fiddle Festival.....	3
Bruce Molsky House Show ...	3
UPCOMING EVENTS .....	4
Nell Robinson Concert .....	4
CBA Winter Music Camp ...	4
Acoustic Music Jams .....	5
Dance Dance Dance .....	5
On the Air KRCS .....	6
On the Air KRSH .....	6
Lessons • Lessons • Lessons	6



## Notes from our President, Steve DeLap

### CAN WE CALL IT A RENAISSANCE?

2011 is starting off to be a banner year as regards folk and acoustic music in Sonoma County. In January alone we have two offerings from Studio E. Dave Alvin is coming and he's bringing at least two of the Guilty Women, Nina Gerber and Christy McWilson. Zoe Muth is opening and I don't think she's guilty of anything yet (just great songwriting and singing), it doesn't hurt to be guilty of that! That show is now up to 3 nights January 13th, 14th and the 15th.

Much of the real excitement for January comes from the Cinnabar Theater's production of Woody Guthrie's American Song. The excellent cast and Elizabeth Craven's incredible direction make this play a once in a lifetime experience. Go see on the first 3 weekends of January. Check the Cinnabar Theater website for times and prices. By the way, this play and last year's amazing "Patsy Cline" and "Hank Williams" productions constitute the beginnings of a Cinnabar offshoot, "The Musical Heritage Theater", creating an opportunity to explore the roots of our American music. Rumor has it that next up for Cinnabar and the Musical Heritage Theater is "Tammy Wynette". Another rumor is that singer-songwriter Si Kahn will be in residence at Cinnabar this next June and July. We'll keep you posted.

Other January happenings have John McCutcheon paying his annual visit to The Sebastiani Theater in Sonoma on Monday January 10th and Bruce Molsky doing a workshop and House Concert in Healdsburg on the 11th. Details elsewhere in this very newsletter. Do note that The BEE EATERS are going to be in Petaluma on Saturday, January 29th at the Petaluma Church Concerts. Google it to find more details.

There are many other goings on in both January and February to be noted, including the return of Alasdair Fraser and Natalie Haas to Sonoma County, this time at the Sebastopol Community Center on Saturday, February 12th. These two filled the house and created great excitement at the Glaser Center in early December and they promise to do the same in February. There is rumor of a new CD in the works as well.

Speaking of the Sebastopol Community Center, The Folk Society, in league with The California Bluegrass Association is creating our 11th annual Bluegrass and Folk Festival on March 12. The line-up this year is amazing. Prepare to check that out as well. Go see some live music. No matter how technically proficient we get at recorded music, it just ain't the same as being there.

### Sonoma County Folk Society sponsored upcoming events:

January 30th, Pickin' Pot-Luck, Subud Hall, Sebastopol

March 11th, The annual Folk and Bluegrass Festival

Future Pickin' Pot-Lucks to put on the calendar will be:

May 29th

July 31st

For more information, go to [www.socofoso.com](http://www.socofoso.com)



### The North Bay

# HOOTENANNY

along with  
KRSH 95.9

present a night of homegrown performers.

Saturday, January 15th

The Last Day Saloon, Santa Rosa

Show 7:30 - Tickets \$10

The North Bay Hootenanny and the KRSH 95.9 are at it

again, hosting another night of local  
folk-Americana artists at the Last Day Saloon,

120 5th Street, Santa Rosa.

This evening features the following local  
performers...

Mr. December

Brian Fitzpatrick

John Courage

Arann Harris and the Farm Band

The Brothers Comatose

For more details phone (707) 326-5274 or e-mail  
[thecruxmusic@gmail.com](mailto:thecruxmusic@gmail.com). And be sure to visit the North  
Bay Hootenanny on Facebook: [www.facebook.com/the-  
north.bay.hootenanny](http://www.facebook.com/the-north.bay.hootenanny). We urge all music lovers to check  
out this show and all the other fun community events

produced by

The North Bay Hootenanny!

### FOLK SINGER JOHN McCUTCHEON RETURNS TO THE SEBASTIANI THEATRE

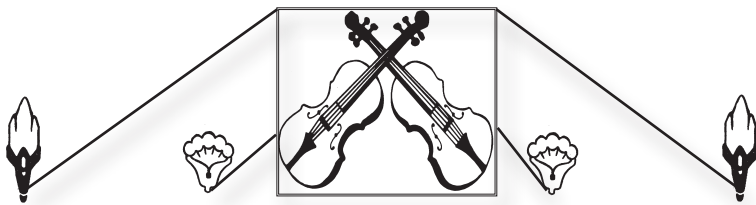
476 First Street East, Sonoma

Monday JANUARY 10, 7:30pm

For details, 707/996-9756, [www.sebastianitheater.com](http://www.sebastianitheater.com)

Tickets \$22.00, VISA & MasterCard are accepted.

John Plays a number of instruments (banjo, guitar, hammer dulcimer, fiddle and so on) and is one of the most incredible songwriters of the last 40 years. Go see him. You won't be sorry!



**36th Annual**

**CLOVERDALE**  
OLD TIME FIDDLE FESTIVAL

**Saturday, January 29 and  
Sunday, January 30, 2011**

**CLOVERDALE CITRUS FAIRGROUNDS**

For more information contact the Cloverdale Historical Society at  
(707) 894-2067  
or visit : [www.cloverdalehistory.org](http://www.cloverdalehistory.org) & [www.cloverdalefiddles.com](http://www.cloverdalefiddles.com)

**Bruce Molsky is coming back  
for a house concert!**

**Thursday January 11, 2011**



At the home of John and Kathy Clendenen

In addition to the concert, there will be a workshop earlier in the afternoon.

The workshop will start at 3:00 and run for 2 hours till 5:00. The concert will start at 7:30. We encourage workshop participants to bring a simple side dish that does not need preparation on site for a potluck. You could also bring a snack for intermission.


Your check sent to us is your ticket to the event. The workshop cost is \$25. The concert tickets are \$18 for fiddle club or Sonoma County Folk Society members and \$20 for non-members. Please make the check out to Bruce Molsky. Send the check to John Clendenen PO Box 69, Healdsburg, CA 95448 **RESERVATIONS REQUIRED**

**DIRECTIONS:**

The concert and workshop will be at 9235 West Dry Creek Road, Healdsburg. Take the Dry Creek Road exit from 101, on the north end of Healdsburg. Turn left on Dry Creek Road and travel to the second stop sign about 8 miles out. Turn left on Yoakim Bridge Road and cross the valley. Turn right on West Dry Creek Road and go about ¾ mile, to 9235. Our house is left up the gravel drive along the creek. There will be direction to parking.

**FOLK NOTES**

Published bi-monthly, 6 times a year  
Sonoma County Folk Society  
P o Box 9659 Santa Rosa CA 95405-9659  
For information, call 707-542-3798  
<http://www.socofoso.com>



The Last  
Record Store

1899 A Mendocino Ave  
Santa Rosa CA 95401

Phone (707) 525-1963

[www.lastrecordstore.com](http://www.lastrecordstore.com)

**Editor's Eye**

**essays correspondence books  
scholastic & newsletters**

Laurie Reaume

(707)869-9230

[lauriereaume@pon.net](mailto:lauriereaume@pon.net)

**Do you want to advertise in  
FolkNotes?**

The Sonoma County Folk Society Board of Directors is very pleased to have Shubb, The Last Record Store and Jackalope Records advertising in our FolkNotes newsletters. If you are interested in promoting your business here, current rates are unbelievably low. For example, a business card sized ad is only \$30/year, and is printed in all 6 issues! You can also opt for a one-time quarter-page ad for \$25, or a half-page (either vertical or horizontal) for \$50. For details, contact Steve at [steves32@sonic.net](mailto:steves32@sonic.net)



**JACKALOPE RECORDS**  
Full Service Recording Facility

**Doug Jayne**  
[jayne@sonic.net](mailto:jayne@sonic.net)

**(707) 696-1100**  
Santa Rosa, California





**STUDIO E**  
A Sonoma County Favorite

Quality Recording,  
Mastering, Production,  
DVD and Video Services

Flexible rates for  
all types of projects  
707.823.5316  
jeffm5@sonic.net

**Other  
Upcoming events...**

**PUT IT ON YOUR CALENDARS!**

**THE NEXT SoCoFoSo  
PICKIN' POTLUCK  
is Sunday January 30th**

**SUBUD HALL  
234 HUTCHINS AVE,  
SEBASTOPOL**

**1:00 P.M. TO 5:00 P.M.**

**For details call: 542-3798**

**MUCH PICKIN'  
MUCH POTLUCKIN'  
MUCH FUN!**



**The 2nd Annual  
California Bluegrass Association  
Winter MUSIC CAMP!  
February 24 - 27 (Thursday-Sunday)**

For students of Bluegrass and Old-Time Music  
At the Walker Creek Ranch, West of Petaluma, CA  
Featured instructors:  
.Banjo, bluegrass -- Bill Evans, Keith Little, Nick Hornbuckle  
.Banjo, oldtime - Evie Ladin, Steve Baughman  
.Guitar -- Kathy Kallick, Jim Nunally, Eric Thompson  
.Mandolin - Roland White, John Reischman, Dix Bruce  
.Fiddle - Greg Spatz, Jack Tuttle, Heidi Clare  
.Dobro - Ivan Rosenberg, Lisa Berman  
.Bass - Trisha Gagnon, Lisa Burns  
.Vocals - Chris Stuart, Janet Beazley  
Jamming 101 - Sid Lewis  
For more details or to register, go to: [www.cbamusiccamp.org](http://www.cbamusiccamp.org)



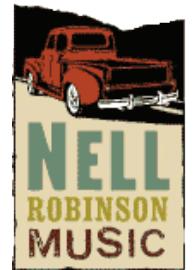
**The Bee Eaters**

Saturday, January 29, 8pm  
Petaluma Church Concerts  
at First Church of Christ Scientist  
522 B St. (corner of B and 6th) Petaluma  
[www.petalumachurchconcerts.com](http://www.petalumachurchconcerts.com)

**A great House Concert featuring  
Nell Robinson  
w/John Reischman & the Jaybirds  
and  
special guests the Henriettas.**

Fresh Bluegrass and Traditional Country Music!  
Sunday February 13, 2011, 4-6pm  
Location: Private residence off Chalk Hill Road, Healdsburg  
Tickets: \$25  
(address & directions will be emailed to you  
with ticket purchase)

Tickets and details available at:  
[nellrobinsonmusic.com/shop](http://nellrobinsonmusic.com/shop)  
For more information about Nell please visit:  
[nellrobinsonmusic.com/jaybirds](http://nellrobinsonmusic.com/jaybirds) and  
[nellrobinsonmusic.com/henriettas](http://nellrobinsonmusic.com/henriettas)



• Nell and the Henriettas were recently featured on  
Garrison Keillor's "A Prairie Home Companion" on NPR.

**From Women's Hearts and  
Hands Guitar Camp**

January 14 - 17, 2011 Mendocino, CA  
For beginners, intermediate and advanced players  
Enjoy superb guitar instruction, play in song circles, share your  
favorite songs at the open no-mics, revel in guitar mania. Folk,  
Blues, Swing/Jazz, Fingerstyle, Celtic, Brazilian, Chord Melody,  
Lead/Improv, Chord Theory, Alternate Tunings, Performance  
Opportunities.  
For details contact [Kayguitarcamp@womensheartsandhands.com](mailto:Kayguitarcamp@womensheartsandhands.com)



**Blue & Lonesome  
aka Ed Neff & Friends**

Bluegrass with some of the Bay Area's finest musicians:  
Ed Neff on mandolin, Paul Shelasky on fiddle,  
Mike Wilhoite on guitar, Larry Cohea on banjo  
and Jeff King on bass.  
Thursdays, 6:30 - 10:00 pm  
Willowbrook Ale House, 3600 Petaluma Blvd. North  
Petaluma 707-775-4232



# Acoustic Music Jams :

**it's always fun to make your own music!**

• **THE REDWOOD CAFE**

8240 Old Redwood Hwy, Cotati

◇ The Celtic Sessions, led by Janette Duncan

and Roxanne Oliva Second Sunday of the month from 4 to 6 pm.

For details call: 585-3138

• **MAIN ST. STATION RESTAURANT**

16280 Main, Guerneville

◇ Slow Celtic Sessions

1st and 3rd Wednesdays, 7 to 9 PM,

For details call: 869-0501

• **COFFEE CATZ**

6761 Sebastopol Ave, Sebastopol,

On Hwy 12 at the Train Station, east end of town.

Check it out every Saturday afternoon from 2 to 5 pm.

Everyone is welcome at this CBA hosted event!

Mark Hogan is a great host.

◇ Old-time, bluegrass, old country.

For more information, contact Mark Hogan at:

hogiemoon@comcast.net or call 829-8012

• **MURPHY'S IRISH PUB**

464 First St Sonoma

◇ First Sunday of the month, celtic jam

For details call 935-0660

• **PETALUMA MOOSE SLO JAM**

◇ Thursday nights at the Petaluma Moose Lodge,

(except the fourth Thursday) 7:00 to 9:00

All skill levels welcome, all instruments welcome

We'll keep it slow and focus on songs that everybody can play along with, no matter what skill level you're at.

For info and details: 707 364 1532

email albertfarrens@msn.com

• **BLUEGRASS AND OLD-TIME JAM**

◇ The 4th Wednesday of every month,

7-9pm at Aqus Café in Petaluma

For info and details: 415-706-1997 or

murphyjohn2008@yahoo.com



# Singer's Circle...

◇ Meets 4th Friday of most months. For information call Dennis Drury at 829-0883.

# Dance Dance Dance...

• **DANCE AWAY**

◇ Contra and English dancing every weekend! Live music, lessons and callers. For detailed info contact: NBCDS Dance Line (707) 527-9794 or

www.nbcds.org or email: info@nbcds.org

• **APPLE TREE MORRIS**

◇ Weekly in Sebastopol. Information: 829-3478 or kalia@sbcglobal.net



## SHUBB

INTELLIGENTLY ENGINEERED FOR THE  
DISCERNING MUSICIAN

WWW.SHUBB.COM

707-843-4068



## Favorite Recipes

We need you, our members to submit "favorite recipes".

This goes for favorite food that you might bring to the PICKN' POT-LUCK and whatever else you would be proud to share.

Please send them to steves32@sonic.net, and include a phone number in case we need to clarify any details; we want to get it right!



<b>Sonoma County Folk Society</b>				<i>Membership begins and ends in the month you join or renew.</i>
<b>Membership Application</b>				
Please fill out and mail: - <input type="checkbox"/> \$10.00 Individual - <input type="checkbox"/> \$15.00 Family Make checks payable to SoCoFoSo.				
2 Year special membership <input type="checkbox"/> \$17.50 Individual - <input type="checkbox"/> \$25.00 Family				
Mail to: SoCoFoSo, PO Box 9659 Santa Rosa CA 95405				
(Please print)				
Name				
Address				
City	State	ZIP	Phone	
Email		comments:		

Contributions to the Sonoma County Folk Society are tax deductible to the extent permitted by law.

## On the Air KRCB:



### Our own NPR Station at 91.1 or 90.9 FM

Great programs, some of particular interest to folkies...

◇ Mondays: 8:00 to 10:00 PM

• **Your Average Abalone**, hosted by Johnny Bazzano,  
1st and 3rd.

• **The Fiddling Zone**, hosted by Gus Garelick, Old Time fiddling,  
Bluegrass, Cajun, Swing, Klezmer and more  
2nd and 4th.

◇ Tuesdays: 10:00 to Midnight

• **Crossing Borders**, World music

◇ Thursdays: 8:00 to 10:00 PM

• **Freight Train Boogie**, hosted by Bill Frater,  
Roots, Country, Folk, Blues, Rock etc.

◇ Saturdays: Noon to 1:00 PM

• **Thistle and Shamrock**, Celtic music

◇ Saturdays 1:00 to 5:00 PM

• **Our Roots Are Showing**, hosted by (*alternating hosts*) Robin  
Pressman and Steve DeLap. Folk, Acoustic,  
Singer-songwriter, Blues, Bluegrass

## On the Air KRSH:

### 95.9FM

◇ **"Krush Uncorked"** Sundays 8-11 AM. Singer-songwriter  
acoustic and unplugged music with Bob Sala

◇ **"Krush Americana"** Monday evenings 7:00 to 10:00 PM.  
Old n' new twang, Country, Americana and Roots Music  
with Bill Bowker



## Lessons • Lessons • Lessons



◇ Fiddle Lessons: Contra and Square dance styles, Celtic,  
Scandia and other International styles by ear and reading  
with music theory, Janette Duncan 707-570-2745

◇ Lessons in guitar, old time banjo, piano and beginning  
accordion. With Ingrid Noyes, in Marshall, on the shores of  
Tomales Bay. For details: 415-663-1342  
or e-mail [ingrid10@sonic.net](mailto:ingrid10@sonic.net)

◇ Kay Eskenazi loves to teach guitar, Folk, Blues, Jazz, Bossa  
Nova, Fingerstyle, Celtic and Classical styles. 707/869-9642  
[service@WomensHeartsAndHands.com](mailto:service@WomensHeartsAndHands.com)

◇ Music lessons at your location: note reading, theory, piano  
instruction for all ages. Laurie 707-869-9230

◇ Steve Wharton teaches Bluegrass: banjo,  
Old Time banjo, Dulcimer, and Autoharp  
707-887-2518.

◇ Learn to play Polish fiddle

Nanette Fynan 707-569-0565

◇ Play the String Bass: lessons in Sebastopol

Bill Amatneek 707-824-8084

◇ Mandolin lessons with Phil Lawrence in Sebastopol

All Styles--All Level

(707) 824-1198 or email: [phlawrence53@yahoo.com](mailto:phlawrence53@yahoo.com)  
[phillawrence.com](http://phillawrence.com)



**Sonoma County Folk Society**  
**PO Box 9659**  
**Santa Rosa CA 95405-9659**

• NEXT DEADLINE FOR ARTICLES •  
February 10th  
To Steve: [steves32@sonic.net](mailto:steves32@sonic.net)



Printed on recycled paper