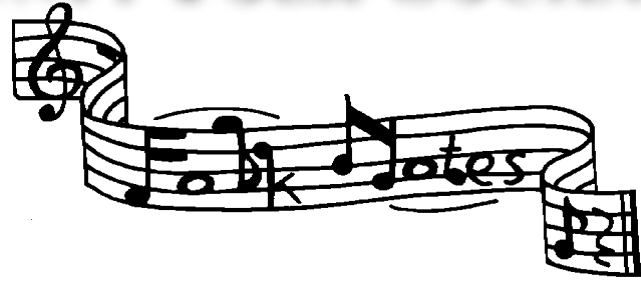


THE SONOMA COUNTY FOLK SOCIETY

March -
April 2011
Volume 16 No. 2

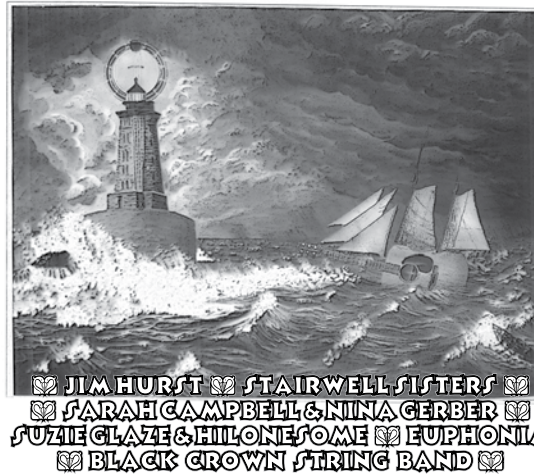


<http://www.socofoso.com>



11th ANNUAL SONOMA COUNTY BLUEGRASS & FOLK FESTIVAL

SATURDAY • MARCH 12, 2011 • 1PM to 8PM • Doors open at noon til 8pm
Sebastopol Community Center 390 Morris Street Sebastopol, California



WORKSHOPS
RAIN OR SHINE

• BRING YOUR INSTRUMENT TO JAM •
• FOOD & BEVERAGE CONCESSION ON SITE •



GENERAL ADMISSION
\$28 adv. \$33 door

SOCOFOSO/CBA Members
\$25 adv. \$30 door

Children 11 years old and under are free when accompanied by an adult admission.
please present current membership card



TICKETS AVAILABLE JANUARY 1: on-line at <http://www.cbaontheweb.org>

For tickets by mail, send a self addressed stamped envelope to SC&BF, 3980 Monika Ct., Sebastopol, Ca. 95472

TICKETS ALSO AVAILABLE: Peoples Music, Sebastopol Last Record Store, Santa Rosa

For further information : www.socofoso.com • 707-829-8012 • 707-542-3798 • hogiemoon@comcast.net



The 11th annual Sonoma County Bluegrass & Folk Festival will be held Saturday March 12, 2011 at the Sebastopol Community Cultural Center, 390 Morris Street. Doors open at noon. The show begins at 1:00 and finishes at 8pm.

The Sonoma County Folk Society and the California Bluegrass Association have collaborated once again to bring you a fine slate of performers.

This year's line up features Jim Hurst, The Stairwell Sisters, Black Crown String Band, Euphonia, Sarah Elizabeth Campbell & Nina Gerber and Suzie Glaze & Hilonesome.

Tickets may be obtained at Peoples Music in Sebastopol and the Last Record Store in Santa Rosa.

Also on line at www.cbaontheweb.org. General admission: \$28 advance - \$33 at the door. For members of the SOCOFOSO and the CBA, tickets are \$25 advance and \$30 at the door. For details: 707-829-8012.

What's Inside

Our 11th Annual Folk and Bluegrass Festival	1
Notes from the President.	2
The Ten Jammandments.....	3
Folk Society Events.....	3
UPCOMING EVENTS	4
Membership "Perks"	4
Pick'n Potluck Recipes	4
Acoustic Music Jams	5
Dance Dance Dance	5
On the Air KRCB	6
On the Air KRSH	6
Lessons • Lessons • Lessons	6



Notes from our President, Steve DeLap

What does this have to do with Folk Music?

(A Public Media Rant)

Well, quite a lot actually. We're talking about the status of public media, that is public radio and television, in general and specifically here in Sonoma County. Public media is under attack because it is perceived to be liberal, it survives with assistance from government grants, and it takes airspace that some think would be better used for "profitable" enterprises. I could write a book about each one of these assertions, but many people already have. I'll try to be brief.

Public media often looks liberal because it is, or at least tries to be, fact-based. For instance, if there is scientific data showing steep rises in ozone depletion, arctic ice loss or atmospheric CO2 levels, it will be so reported. Public media also tries to, and in fact has a mandate, to present both sides of an issue. I guess that means half of the time I like what I'm hearing, half the time I don't. Oh well.

This attempt at impartiality, brings the reason for support from government grants. Actually, the grants are from a private non-profit corporation funded by the Government. This provides a bit of a firewall between officialdom and your local public station. Anyway, simply put, he who pays the piper calls the tune. So, if you provide some support to public radio or TV by your membership, and the government, through an intermediary provides some support, and the local business community provides some support through underwriting, maybe the public station in your town will be independent enough to tell the truth when such is needed. That's the plan, anyway and it often works fairly well though as in all human endeavors, it's a constant process of trying to find the balance and explain a multifaceted world in a linear presentation (that means there's lots of stuff going on all at once and media can only say or do things one at a time. Think about it.) It should also be noted here that public stations, both radio and television are prohibited from doing much more than very limited advertising (called underwriting). This means they are not allowed to raise money by selling airtime like commercial stations can. Thus, such very lucrative funding is just not available.

The third item, airspace, or as it's often called, bandwidth, is also under attack. It seems that there are people in power who can't understand why we need more than one public station in a market. That is, why do you

need four TV stations in the Bay Area, for instance, KRCB, KCSM, KTEH, and KQED, when one would do, and couldn't we use the airspace of the "extra" three to provide more cell phone or texting or downloading capacity, thus providing more profit for AT&T, Verison, T-Mobile, Sprint and so on. If all these stations were indeed carrying the same thing, the argument would have some validity. They don't and it's worth checking out all of them to see the variety. (By the way, becoming a member of any one of them does not support any of the others, sorry.) These stations all have the potential to serve a local community both geographically and culturally. That is, the problems, events, festivals, plays, concerts, and the interest groups are not the same in San Jose as they are in Sonoma County, the Peninsula, in San Francisco or the East Bay. These special interests include folk music of course. Even I wondered when we'd get back to that.

It should be noted that folk music depends on public media, as does jazz, and world music. These forms of music don't "sell well". Notice there is no national televised "Folk Award Nights" and there are no formulaic folk radio stations (OK, well, maybe on the Internet). The music has a specialized audience that tends not to always follow mass trends in music so it is spread by a few Internet sites, word of mouth, a number of traveling troubadours giving house concerts or small auditorium concerts (for example, at the Freight and Salvage) and public radio. In our community it's KRCB-FM; in the Bay Area, KPFA and KALW. There is a list of folk oriented programs at singout.org and you will note that most of the listings across the country are on public radio. That is probably enough rant for now. Since there are, at the moment, at least six bills in Congress addressing the defunding of public media, things may have changed by the time you read this. Hopefully we're finding a way to keep folk music and other public media programming on the air. We deserve a voice. Thanks.

FOLKS ASK, WHAT CAN I DO, HOW DO I GET INVOLVED? This takes no more then ten minutes to do CALL YOUR SENATORS AND CONGRESSIONAL REPRESENTATIVES and CHECK OUT THE WEB SITE BELOW!

**Find out more and add your voice
to the cause at**

www.170millionamericans.org

FOLK NOTES

Published bi-monthly, 6 times a year
Sonoma County Folk Society
P o Box 9659 Santa Rosa CA 95405-9659
For information, call 707-542-3798
<http://www.socofoso.com>

The Ten Jammandments

- I. Thou Shalt Tune Thy Instrument. ~
Electronic tuners make this easy.
- II. Thou Shalt Keep Steady Rhythm. ~
Count beats if necessary.
- III. Thou Shalt Take Turns Choosing Songs. ~
Announce the key. Vocalists always choose their key. ~ Choose a song you can complete, and that at least half the jammers know.
- IV. Thou Shalt Not Speed. ~
Start songs at a reasonable tempo, and hold it, please.
- V. Thou Shalt Signal Who Has The Solo. ~
Follow a pattern when taking solo leads.
- VI. Thou Shalt Listen To Others. ~
If you can't hear the lead, consider yourself too loud (and then quiet down).
- VII. Thou Shalt Welcome Others. ~
Include everyone in your jam. Help everyone sound as good as they can.
- VIII. Thou Shalt Not bring NON bluegrass Instruments to the Jam ~
Please leave at home your: flute, trumpet, drums, amp, piano, sax, etc.
- IX. Thou Shalt Infrequently Try New Material. ~
Original & different tunes are OK occasionally, but must be easy enough to follow.
- X. Thou Shalt Be Considerate Of "new" Pickers.
Help beginners.

Contributed with adaptations from Larry Carlin and Jack Murphy.



Sonoma County Folk Society sponsored upcoming events:

- March 12 Folk and Bluegrass Festival, Sebastopol, CA
 - May 29 Pickin' Potluck SUBUD Hall, Sebastopol, CA 1:00-5:00
 - July 31 Pickin' Potluck, SUBUD Hall, Sebastopol, CA 1:00-5:00
 - August 19-21 Golden Old Time Music Campout, Boonville, CA
 - October 30 Pickin' Potluck, SUBUD Hall, Sebastopol, CA 1:00-5:00
- For details and updates, go to socofofo.com or phone 542-3798



**THE LAST
RECORD STORE**

1899 A MENDOCINO AVE
SANTA ROSA CA 95401

PHONE (707) 525-1963

WWW.LASTRECORDSTORE.COM

Editor's Eye

**essays correspondence books
scholastic & newsletters**

Laurie Reaume

(707)869-9230

lauriereaume@pon.net

Do you want to advertise in FolkNotes?

The Sonoma County Folk Society Board of Directors is very pleased to have Shubb, The Last Record Store and Jackalope Records advertising in our FolkNotes newsletters. If you are interested in promoting your business here, current rates are unbelievably low. For example, a business card sized ad is only \$30/year, and is printed in all 6 issues! You can also opt for a one-time quarter-page ad for \$25, or a half-page (either vertical or horizontal) for \$50. For details, contact Steve at steves32@sonic.net



JACKALOPE RECORDS
Full Service Recording Facility

Doug Jayne
jayne@sonic.net

(707) 696-1100
Santa Rosa, California





STUDIO E
A Sonoma County Favorite

Quality Recording,
Mastering, Production,
DVD and Video Services

Flexible rates for
all types of projects
707.823.5316
jeffm5@sonic.net

Other

Upcoming events...

PUT IT ON YOUR CALENDARS!

**THE NEXT SoCoFoSo
PICKIN' POTLUCK
is Sunday May 29th**

**SUBUD HALL
234 HUTCHINS AVE,
SEBASTOPOL**

1:00 P.M. TO 5:00 P.M.

For details call: 542-3798

**MUCH PICKIN'
MUCH POTLUCKIN'
MUCH FUN!**



Sonoma County Folk Society

MEMBERSHIP "PERKS"

Some of you readers might be missing out on some of the advantages of your Sonoma County Folk Society membership. You may not be aware of one of more of the following member opportunities:

- If you teach music lessons OR if you have an instrument for sale, you may put a listing here in the FolkNotes newsletter (limited space, but FREE!).
- You can ask for a LINK to your band's website from our socofoso.com site.
- You can voice your opinion or rave about local acoustic music events right here!
- You may be able to get a photo or short video clip of your acoustic music posted on the socofoso.com website.
- You get discounts on many local concerts, from \$2 to \$5 savings per event.
- You can donate an informational article to FolkNotes about a particular instrument or genre of music; share your expertise. You can also write about your favorite place to hear folk music, or a bio of a local artist.
- You can join our list of volunteers. We can always use folks to help set up for our jams, "man" informational tables, and even volunteer at our festivals!
- See membership form on page 5.

**Blue & Lonesome
aka Ed Neff & Friends**

Bluegrass with some of the Bay Area's finest musicians:
Ed Neff on mandolin, Paul Shelasky on fiddle,
Mike Wilhoyte on guitar, Larry Cohea on banjo
and Jeff King on bass.

Thursdays, 6:30 - 10:00 pm

Willowbrook Ale House, 3600 Petaluma Blvd. North
Petaluma 707-775-4232



Kevin Russell presents..

Singer - Guitarist - Fiddler Ray Bierl

with Markie Sanders on bass

Saturday February 26th

Doors 7:00pm, show time 7:30pm

The Sebastopol Community Center

425 Morris St., Sebastopol

\$15 in advance, \$20 at the door, \$15 for SoCoFoSo members,
available at The Last Record Store in Santa Rosa

Under the Radar plays The Aqus Cafe (189 H St.) in Petaluma
on Friday March 18th from 7 to 9pm.

Under the Radar plays

The Sebastopol Center for the Arts Casual Concert Series

Friday April 8th from 8 to 10pm. Tickets \$12 at the door

For details: 707-824-1858 or krussellmft@aol.com

T H A N K S !

**Member input is important to
FolkNotes!!**

**The Sonoma County Folk Society and FolkNotes
is here to help publicize the events, jams, music
and dance classes and get together for and by
our members.**

**Heck, you are welcome to write an article or a
review of an event you recently attended!**

**Contact me at steves32@sonic.net so we can
get it in print. Email with your phone number and
I will call for details.**

Acoustic Music Jams :

it's always fun to make your own music!

- **THE REDWOOD CAFE**

8240 Old Redwood Hwy, Cotati

◇ The Celtic Sessions, led by Janette Duncan and Roxanne Oliva Second Sunday of the month from 4 to 6 pm.

For details call: 585-3138

- **MAIN ST. STATION RESTAURANT**

16280 Main, Guerneville

◇ Slow Celtic Sessions

1st and 3rd Wednesdays, 7 to 9 PM,

For details call: 869-0501

- **COFFEE CATZ**

6761 Sebastopol Ave, Sebastopol,

On Hwy 12 at the Train Station, east end of town.

Check it out every Saturday afternoon from 2 to 5 pm.

Everyone is welcome at this CBA hosted event!

Mark Hogan is a great host.

◇ Old-time, bluegrass, old country.

For more information, contact Mark Hogan at: hogiemoon@comcast.net or call 829-8012

- **MURPHY'S IRISH PUB**

464 First St Sonoma

◇ First Sunday of the month, celtic jam

For details call 935-0660

- **BLUEGRASS AND OLD-TIME JAM**

◇ The 4th Wednesday of every month, 7-9pm at Aquas Café in Petaluma

For info and details: 415-706-1997 or

murphyjohn2008@yahoo.com



Dance Dance Dance...

- **DANCE AWAY**

◇ Contra and English dancing every weekend! Live music, lessons and callers. For detailed info contact: NBCDS Dance Line (707) 527-9794 or

www.nbcds.org or email: info@nbcds.org

- **APPLE TREE MORRIS**

◇ Weekly in Sebastopol. Information: 829-3478 or kalia@sbcglobal.net



SHUBB

INTELLIGENTLY ENGINEERED FOR THE
DISCERNING MUSICIAN

WWW.SHUBB.COM

707-843-4068

Pick'n Potluck Favorite Recipes

Folkie Cheese Glop Supreme

Grease casserole and put in:

Butter and cube 6 slices bread (any kind of good bread works)

Beat: 4 eggs

Add: 2 cups milk

1 Tablespoon dry mustard

1 # shredded cheddar

Combine and refrigerate overnight. Bake at 350° for 1 hour.

From Betty Nudelman

We need you, our members to submit "favorite recipes".

This goes for favorite food that you might bring to the PICKN' POT-LUCK and whatever else you would be proud to share.

Please send them to steves32@sonic.net, and include a phone number in case we need to clarify any details; we want to get it right!

All new
column!

Singer's Circle...

◇ Meets 4th Friday of most months. For information call Dennis Drury at 829-0883.

Sonoma County Folk Society

Membership Application

Please fill out and mail: - \$10.00 Individual - \$15.00 Family Make checks payable to SoCoFoSo.

2 Year special membership \$17.50 Individual - \$25.00 Family NEW RENEWAL

Mail to: SoCoFoSo, PO Box 9659 Santa Rosa CA 95405

(Please print)

Name

Address

City

State

ZIP

Phone

EMail

comments:

Membership begins and ends
in the month you join or

Contributions to the Sonoma County Folk Society are tax deductible to the extent permitted by law.

On the Air KRCB:



Our own NPR Station at 91.1 or 90.9 FM

Great programs, some of particular interest to folkies...

◇ Mondays: 8:00 to 10:00 PM

• **Your Average Abalone**, hosted by Johnny Bazzano, 1st and 3rd.

• **The Fiddling Zone**, hosted by Gus Garelick, Old Time fiddling, Bluegrass, Cajun, Swing, Klezmer and more 2nd and 4th.

◇ Tuesdays: 10:00 to Midnight

• **Crossing Borders**, World music

◇ Thursdays: 8:00 to 10:00 PM

• **Freight Train Boogie**, hosted by Bill Frater, Roots, Country, Folk, Blues, Rock etc.

◇ Saturdays: Noon to 1:00 PM

• **Thistle and Shamrock**, Celtic music

◇ Saturdays 1:00 to 5:00 PM

• **Our Roots Are Showing**, hosted by (*alternating hosts*) Robin Pressman and Steve DeLap. Folk, Acoustic, Singer-songwriter, Blues, Bluegrass

On the Air KRSH:

95.9FM



◇ **"Krush Uncorked"** Sundays 8-11 AM. Singer-songwriter acoustic and unplugged music with Bob Sala

◇ **"Krush Americana"** Monday evenings 7:00 to 10:00 PM. Old n' new twang, Country, Americana and Roots Music with Bill Bowker

Lessons • Lessons • Lessons



◇ **Fiddle Lessons:** Contra and Square dance styles, Celtic, Scandia and other International styles by ear and reading with music theory, Janette Duncan 707-570-2745

◇ **Lessons in guitar, old time banjo, piano and beginning accordion.** With Ingrid Noyes, in Marshall, on the shores of Tomales Bay. For details: 415-663-1342 or e-mail ingrid10@sonic.net

◇ **Kay Eskenazi loves to teach guitar, Folk, Blues, Jazz, Bossa Nova, Fingerstyle, Celtic and Classical styles.** 707/869-9642 service@WomensHeartsAndHands.com

◇ **Music lessons at your location: note reading, theory, piano instruction for all ages.** Laurie 707-869-9230

◇ **Steve Wharton teaches Bluegrass: banjo, Old Time banjo, Dulcimer, and Autoharp** 707-887-2518.

◇ **Learn to play Polish fiddle**

Nanette Fynan 707-569-0565

◇ **Play the String Bass: lessons in Sebastopol** Bill Amatneek 707-824-8084

◇ **Mandolin lessons with Phil Lawrence in Sebastopol** All Styles--All Level (707) 824-1198 or email: phlawrence53@yahoo.com phillawrence.com



Sonoma County Folk Society
PO Box 9659
Santa Rosa CA 95405-9659

• **NEXT DEADLINE FOR ARTICLES** •
April 10th
To Steve: steves32@sonic.net



Printed on recycled paper