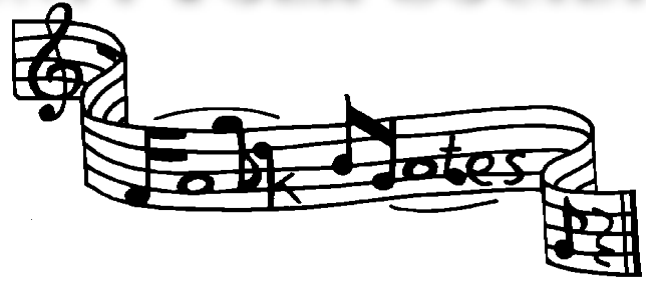


THE SONOMA COUNTY FOLK SOCIETY

**November -
December 2010**
Volume 15 No. 6



<http://www.socofoso.com>

A very special event co-sponsored by the Cinnabar Theater and The Sonoma County Folk Society.

“ Woody Guthrie’s American Song ”

Songs and writings by Woody Guthrie

A musical conceived and adapted by Peter Glazer

This stirring musical journey follows legendary singer-songwriter Woody Guthrie on the cross country travels that inspired his songs about American life and events during the Great Depression and Dust Bowl era. Featuring over two dozen of Woody Guthrie’s most famous ballads and folk songs including “Bound for Glory” and “This Land Is Your Land.”

WHEN: Dec. 31, 2010 to Jan, 23, 2011

WHERE: Cinnabar Theater, Petaluma

Special Member Benefit:

Friday, December 30, The Sonoma County Folk Society has a limited number of seats for a special final dress rehearsal of the show.

Current members only price \$10. Call (707) 542 3798 or email

www.socofoso@yahoo.com to reserve your place for this special performance



What's Inside

Woody Guthrie’s American Song	1
Notes from the President...	2
SoCoFoSo upcoming events..	2
Upcoming Events.....	4
Ukulele Undercurrents	4
Favorite Recipes NEW!.....	5
Acoustic Music Jams	5
Dance Dance Dance	5
On the Air KRCB	6
On the Air KRSH	6
Lessons • Lessons • Lessons	6



Notes from our President, Steve DeLap

JUST CATCHING UP

Things have been kinda' busy with the Folk Society lately. On October 8th, we had a very successful "house" concert at Subud Hall with Bill Staines. Bill provided almost two hours of entertaining stories and songs and left us with the desire to hear more. Bill comes to the West Coast almost every October and we hope we can get him back in the future.

On Sunday, October 31st we had our last Pickin' Potluck of the year, also at Subud. It was good food and music all around. With different spaces in the building, we're finding these gatherings are a good place for players of all different levels to do lots of tunes and songs. The next Pickin' Potluck will be on Sunday January 30.

We won't be idle, as opportunities involving the Folk Society keep coming. For instance, on Friday, December 10th, Subud Hall is having their 2nd Annual Subud Hall Benefit. The Folk Society is producing the first hour from 7 until 8 pm with two newly established local bands. The first group, The Sweet Penny Royals have been playing in local venues in the Sebastopol area for a while and the second band, The Two Rock Rangers are heard more around Petaluma. Though both groups are newly formed, both are staffed with long-time Sonoma County musicians making it a real treat to hear them in their most recent configurations. A surprise or two from the Folk Society are in store as well in this great evening of entertainment. In fact, the second half of the evening is given over to Mr. Music and the Love Choir, so when you come, get ready to do some major league Christmas singing.

A very exciting opportunity for the Folk Society comes right after Christmas when we team up with the Cinnabar Theater for their production of "Woody Guthrie's American Song". This wonderful play involves at least seven incredible actors and musicians. The Folk Society will have the opportunity to provide our members with a special Dress Rehearsal showing as well as the chance for our musicians to provide pre-performance music for some or all of the performances.

The play's first performance is a Gala evening on New Year's Eve, December 31st and performances continue through Sunday, January 23. Stand by for more information and a chance to see this marvelous production as guests of the Sonoma County Folk Society on our pre-show date, December 30th.

Next year on Saturday, March 11, comes our annual Bluegrass and Folk Festival. The lineup for this one is especially good so save the date and get ready for incredible music. Good volunteers are always in demand for this great festival. Meanwhile have a wonderful holiday season and as Woody Guthrie would say, "Take it easy but Take it".

FOLK NOTES

Published bi-monthly, 6 times a year
Sonoma County Folk Society
P o Box 9659 Santa Rosa CA 95405-9659
For information, call 707-542-3798
<http://www.socofoso.com>

Sonoma County Folk Society sponsored upcoming events:

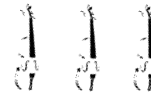
December 10th, 2nd annual Subud Hall Benefit

December 30th, "Woody Guthrie's American Song" at the Cinnabar Theater, Petaluma

January 30th, Pickn' Pot-Luck, Subud Hall, Sebastopol

March 11th, The annual Folk and Bluegrass Festival

For more information, go to www.socofoso.com



The Cloverdale Fiddle Festival has been saved!

Many thanks to the Lagunitas Brewing Co

The Cloverdale Fiddle Contest is back on schedule. Saving the contest from the brink of cancellation, the Lagunitas Brewing Co of Petaluma came through in the "eleventh hour" to provide some much-needed funding to keep the contest going for at least another year.

The date will be Jan. 29-30 at the Citrus Fairgrounds in Cloverdale.

For details (707) 894-2067

www.cloverdalehistoricalsociety.org/fiddle

Please come out and support this event and keep it going!

WE WISH ALL OF OUR FRIENDS AND MEMBERS PEACE AND JOY FOR THE NEW YEAR.

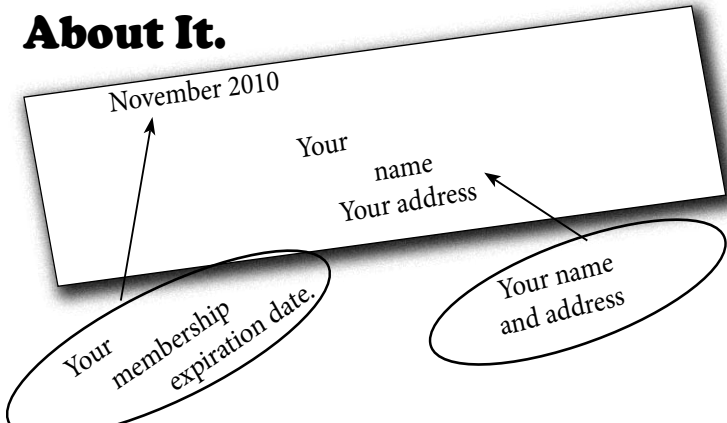


HAPPY HOLIDAYS



Happy Thanksgiving

The Anatomy of Your Mailing Label and What You Can Do About It.



Please check your Membership expiration date !

If your expiration date says November 2010 or before then we really need you to RENEW your membership to the Sonoma County Folk Society. Memberships are the line of financial support that we count on to make this all possible! What it means to you is that, with your current membership, we can continue to present events such as the Annual Bluegrass and Folk Festival in March, the 5th Sundays at Subud Hall, the mini concerts during the year and yes, even this newsletter. You won't receive a reminder so, please keep an eye on the label each issue. Please help out and support the music that we all enjoy with your membership, and even consider giving a GIFT membership to a friend for the holidays.

Thank you from the SoCoFoSo!



SHUBB

INTELLIGENTLY ENGINEERED FOR THE
DISCERNING MUSICIAN

WWW.SHUBB.COM

707-843-4068



**THE LAST
RECORD STORE**

1899 A MENDOCINO AVE
SANTA ROSA CA 95401

PHONE (707) 525-1963

WWW.LASTRECORDSTORE.COM

Editor's Eye

**essays correspondence books
scholastic & newsletters**

Laurie Reaume
(707)869-9230

lauriereaume@pon.net

Do you want to advertise in FolkNotes?

The Sonoma County Folk Society Board of Directors is very pleased to have Shubb, The Last Record Store and Jackalope Records advertising in our FolkNotes newsletters. If you are interested in promoting your business here, current rates are unbelievably low. For example, a business card sized ad is only \$30/year, and is printed in all 6 issues! You can also opt for a one-time quarter-page ad for \$25, or a half-page (either vertical or horizontal) for \$50. For details, contact Steve Hogle at steves32@sonic.net



JACKALOPE RECORDS

Full Service Recording Facility

Doug Jayne
jayne@sonic.net

(707) 696-1100
Santa Rosa, California





STUDIO E
A Sonoma County Favorite

Quality Recording,
Mastering, Production,
DVD and Video Services

Flexible rates for
all types of projects
707.823.5316
jeffm5@sonic.net

**Other
Upcoming events...**

PUT IT ON YOUR CALENDARS!

**THE NEXT SoCoFoSo
PICKIN' POTLUCK
is Sunday January 30th**

**SUBUD HALL
234 HUTCHINS AVE,
SEBASTOPOL**

1:00 P.M. TO 5:00 P.M.

For details call: 542-3798

**MUCH PICKIN'
MUCH POTLUCKIN'
MUCH FUN!**



**The Hootenanny and KRSH
Support Local Up-and-Coming
Musicians**

**Saturday November 20th
Show 7:30 - Tickets \$8.00**

The North Bay Hootenanny and KRSH 95.9 will be hosting a fun evening of homegrown folk-Americana artists at the Last Day Saloon, 120 5th Street, Santa Rosa. Sonoma County boasts an amazing number of amazing folk musicians, and we are thrilled to showcase some of them at a great venue. This special event will feature up-and-coming artists Old Jawbone, David Luning, The Easy Leaves, Three Legged Sister, and Skiffle Symphony.

For more information, call (707) 326-5274 or email to thecru music@gmail.com and please visit the North Bay Hootenanny on Facebook: www.facebook.com/the.north.bay.hootenanny. We urge all music-lovers in Sonoma County to check out this show and all of the other fun community events that The North Bay Hootenanny produces!



**The Gravenstein Mandolin
Ensemble**

Saturday Nov.20, 7 to 9 p.m.

**The Petaluma Arts Center
230 Lakeville Avenue**

The ensemble consists of 14 members with mandolins, mandolas, mandocellos and guitar. An eclectic repertoire includes everything from George Frederic Handel to Scott Joplin, with stops in Ireland, Italy and Brazil along the way. This is a rare opportunity to hear the sound of a classical mandolin ensemble. Tickets \$15 at the door. Details: Gus (526-7763).

**Blue & Lonesome
aka Ed Neff & Friends**

Bluegrass with some of the Bay Area's finest musicians: Ed Neff on mandolin, Paul Shelasky on fiddle, Mike Wilhoite on guitar, Larry Cohea on banjo and Jeff King on bass.

Thursdays, 6:30 - 10:00 pm

Willowbrook Ale House, 3600 Petaluma Blvd. North
Petaluma 707-775-4232



Ukulele Undercurrents...



**8TH ANNUAL KAPALAKIKO
NEWSLETTER FUNDRAISER -
'AHA'AINA [FEAST]**

SATURDAY, 13 NOVEMBER 2010

FEATURING

**KAUA'I'S LIVING TREASURE
NATHAN KALAMA**

IN CONCERT WITH THE
KAPALAKIKO HAWAIIAN BAND
HULA BY

DEANIE LUM-VILLIADOS &
KAULANA NĀ PUA O HAWAI'I DANCERS
MEA 'AI (FOOD) BY THE ZANE OHANA
NEWARK PAVILION, 6430 THORNTON AVENUE,
NEWARK, CA

DOORS OPEN AT 4:00 PM

FOR DETAILS WWW.KAPALAKIKO.ORG
OR

PHONE (415) 468-7125



Acoustic Music Jams :

it's always fun to make your own music!

• THE REDWOOD CAFE

8240 Old Redwood Hwy, Cotati

◇ The Celtic Sessions, led by Janette Duncan and Roxanne Oliva Second Sunday of the month from 4 to 6 pm.

For details call: 585-3138

• MAIN ST. STATION RESTAURANT

16280 Main, Guerneville

◇ Slow Celtic Sessions

1st and 3rd Wednesdays, 7 to 9 PM,

For details call: 869-0501

• COFFEE CATZ

6761 Sebastopol Ave, Sebastopol,

On Hwy 12 at the Train Station, east end of town.

Check it out every Saturday afternoon from 2 to 5 pm.

Everyone is welcome at this CBA hosted event!

Mark Hogan is a great host.

◇ Old-time, bluegrass, old country.

For more information, contact Mark Hogan at: hoghiemoon@comcast.net or call 829-8012

• MURPHY'S IRISH PUB

464 First St Sonoma

◇ First Sunday of the month, celtic jam

For details call 935-0660

• PETALUMA MOOSE SLO JAM

◇ Thursday nights at the Petaluma Moose Lodge, (except the fourth Thursday) 7:00 to 9:00

All skill levels welcome, all instruments welcome

We'll keep it slow and focus on songs that everybody can play along with, no matter what skill level you're at.

For info and details: 707 364 1532

email albertfarrens@msn.com

Singer's Circle...

◇ Meets 4th Friday of most months. For information call Dennis Drury at 829-0883.



Dance Dance Dance...

• DANCE AWAY

◇ Contra and English dancing every weekend! Live music, lessons and callers. For detailed info contact: NBCDS Dance Line (707) 527-9794 or

www.nbcds.org or email: info@nbcds.org

• APPLE TREE MORRIS

◇ Weekly in Sebastopol. Information: 829-3478 or kalia@sbcglobal.net



Favorite Recipes

A great way to use up leftover turkey, especially if you're sick of turkey dinner, turkey sandwiches, turkey hash, turkey soup, etc. TOO MUCH TURKEY!

Santa Fe Enchilada Bake

4 cups chopped cooked turkey or chicken

1 large onion, chopped

1 green pepper, chopped

2 cups salsa

10 oz package frozen corn, thawed & drained (or equivalent in fresh corn)

12 corn tortillas

1 cup sour cream

1-2 cups Mexican style finely grated cheese

1. Preheat oven 400 degrees. Spray large non-stick skillet with cooking spray.

Cook onions & peppers until cooked through, about 10 minutes.

Add chopped meat.

Stir in corn & salsa.

2. Spray 13x9" casserole dish with cooking spray. Arrange 6 tortillas at bottom of dish.

3. Cover tortillas with 1/2 the chicken mixture, 1/2 the sour cream and 1/2 the cheese

4. Repeat layers: remaining tortillas, chicken mixture, sour cream and cheese.

5. Cover with foil and bake for 30 minutes. Remove foil and bake another 10 minutes until top cheese is bubbly.

6. Let stand 5 minutes. Can be garnished with chopped olives, avocado, green onions, and/or chopped tomatoes

...from Colleen Arroyo

MEMBERS, submit your "Favorite Recipes".

To: steves32@sonic.net.



Sonoma County Folk Society

Membership Application

Please fill out and mail: - \$10.00 Individual - \$15.00 Family Make checks payable to SoCoFoSo.

2 Year special membership \$17.50 Individual - \$25.00 Family

Mail to: SoCoFoSo, PO Box 9659 Santa Rosa CA 95405

(Please print)

Name

Address

City

State

ZIP

Phone

EMail

comments:

Contributions to the Sonoma County Folk Society are tax deductible to the extent permitted by law.

On the Air KRCB:



Our own NPR Station at 91.1 or 90.9 FM

Great programs, some of particular interest to folkies...

◇ Mondays: 8:00 to 10:00 PM

• **Your Average Abalone**, hosted by Johnny Bazzano, 1st and 3rd.

• **The Fiddling Zone**, hosted by Gus Garelick, Old Time fiddling, Bluegrass, Cajun, Swing, Klezmer and more 2nd and 4th.

◇ Tuesdays: 10:00 to Midnight

• **Crossing Borders**, World music

◇ Thursdays: 8:00 to 10:00 PM

• **Freight Train Boogie**, hosted by Bill Frater, Roots, Country, Folk, Blues, Rock etc.

◇ Saturdays: Noon to 1:00 PM

• **Thistle and Shamrock**, Celtic music

◇ Saturdays 1:00 to 5:00 PM

• **Our Roots Are Showing**, hosted by (*alternating hosts*) Robin Pressman and Steve DeLap. Folk, Acoustic, Singer-songwriter, Blues, Bluegrass

On the Air KRSH:

95.9FM



◇ **"Krush Uncorked"** Sundays 8-11 AM. Singer-songwriter acoustic and unplugged music with Bob Sala

◇ **"Krush Americana"** Monday evenings 7:00 to 10:00 PM. Old n' new twang, Country, Americana and Roots Music with Bill Bowker

Lessons • Lessons • Lessons



◇ **Fiddle Lessons:** Contra and Square dance styles, Celtic, Scandia and other International styles by ear and reading with music theory, Janette Duncan 707-570-2745

◇ **Lessons in guitar, old time banjo, piano and beginning accordion.** With Ingrid Noyes, in Marshall, on the shores of Tomales Bay. For details: 415-663-1342

or e-mail ingrid10@sonic.net

◇ **Kay Eskenazi loves to teach guitar, Folk, Blues, Jazz, Bossa Nova, Fingerstyle, Celtic and Classical styles.** 707/869-9642 service@WomensHeartsAndHands.com

◇ **Music lessons at your location: note reading, theory, piano instruction for all ages.** Laurie 707-869-9230

◇ **Steve Wharton teaches Bluegrass: banjo, Old Time banjo, Dulcimer, and Autoharp** 707-887-2518.

◇ **Learn to play Polish fiddle**

Nanette Fynan 707-569-0565

◇ **Play the String Bass: lessons in Sebastopol**

Bill Amatneek 707-824-8084

◇ **Mandolin lessons with Phil Lawrence in Sebastopol**

All Styles--All Level

(707) 824-1198 or email: phlawrence53@yahoo.com
phillawrence.com



Sonoma County Folk Society
PO Box 9659
Santa Rosa CA 95405-9659

• **NEXT DEADLINE FOR ARTICLES** •
December 10th
To Steve: steves32@sonic.net



Printed on recycled paper