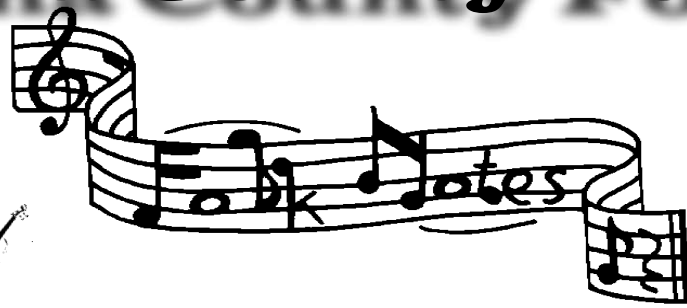


# The Sonoma County Folk Society

January -  
February 2009  
Volume 14 No. 1



<http://www.socofoso.com>

## 9TH ANNUAL SONOMA COUNTY BLUEGRASS FOLK FESTIVAL

SATURDAY MARCH 14, 2009 1PM- 9PM

Sebastopol Community Center  
390 Morris Street Sebastopol, CA

LAURIE LEWIS AND TOM ROZUM

THE MARY GIBBONS  
MICHAEL STADLER BAND  
WITH PAUL KNIGHT AND JON MITGUARD

ROSEBUD BLUE

KAPALAKIKO HAWAIIAN BAND

RAY BIERL TRIO

EARL BROTHERS

WORKSHOPS - RAIN or SHINE

- Bring your instrument to jam •
- Food & Beverage concession on site •

For further information please go online to  
[www.socofoso.com](http://www.socofoso.com)  
or contact Mark Hogan at 707 829 8012



Presented by  
The Sonoma County Folk Society  
and  
The California Bluegrass Association



SONOMA  
COUNTY  
FOLK  
SOCIETY

### What's Inside

|                             |   |
|-----------------------------|---|
| The Folk and Bluegrass Fest | 1 |
| Notes From the President... | 2 |
| Thanks KRSH .....           | 2 |
| Ukulele Undercurrents ..... | 3 |
| Womans Guitar Workshop .    | 3 |
| Upcoming Events.....        | 4 |
| Acoustic Music Jams .....   | 5 |
| Dance Dance Dance .....     | 5 |
| On the Air KRCS .....       | 6 |
| On the Air KRSH .....       | 6 |
| Lessons • Lessons • Lessons | 6 |

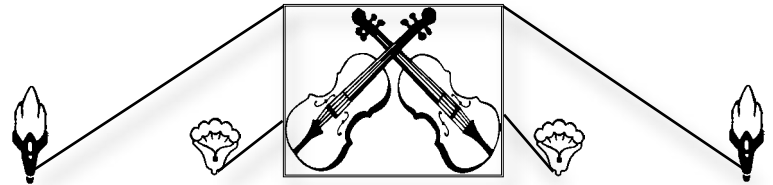


## Notes from our President, Steve DeLap

Well, things seem to have changed a bit since I last attempted to explore the wonderful world of folk & acoustic music. Mainly, we apparently have fewer dollars than before with predictions of more “less” to come. Of course, this austerity has less effect on those of us who listen to and play homemade music. We have the advantage of being able to make our own entertainment or, at least, hang out with local folks making music. There’s a number of places in Sonoma County where music happens as a matter of course. Steve Wharton’s Monday night Open Mic at the Ace in the Hole Pub comes to mind, or Bill Decarli’s Tuesday night open mic at Hop-monk as places where, for the price of a drink, one can hear a great variety of music. The jams that happen at the Black Rose on most Wednesdays as well as the monthly Celtic jams at Murphy’s in Sonoma (first Sunday) and the Redwood Café in Cotati (second Sunday) are also great sources of musical activity. We should mention the radio. Our back page listing of folk on the air details some likely sources on the airwaves. Don Bradley’s monthly email listing clubs, pubs and house concerts as well as KRCB’s on-line folk and acoustic calendar identifies local music happenings good for an evening’s activities for not a lot of dollars.

A check of the internet also has some great sources. Free listening abounds, free downloading seems to be more limited. One new and interesting site for a free listen belongs to the Freight and Salvage. Look for “Freight Radio” on their Calendar page wherein each upcoming show listing features a playable song or tune as part of the listing.

In other news, the Folk Society had a very successful 5th Sunday Pickin’ Potluck at the end of November. Lots of music, and good food. The next 5th Sunday is not until March 29th. That’s a long time to wait but there will be a great Folk & Bluegrass Festival on Saturday, March 14th. How about Michael Stadler and Mary Gibbons, and Ray Beirl, and LAURIE LEWIS. There’ll be lots of other good folks as well, so save the date. Also, on Friday, February 6th, Kevin Russell is presenting a concert by the Claire Lynch Band at the Sebastopol Community Center Youth Annex. Claire Lynch is one of the BIG NAMES in Bluegrass and Kevin is giving Folk Society members a nice break on the admission. Need I say more.....



**35th Annual**

**CLOVERDALE**  
OLD TIME FIDDLE FESTIVAL

**Saturday, January 24 and  
Sunday, January 25, 2009**

**CLOVERDALE CITRUS FAIRGROUNDS**

For details (707) 894-2067

[www.cloverdalehistoricalsociety.org/fiddle](http://www.cloverdalehistoricalsociety.org/fiddle)

### **A huge Thank You to KRSH 95.9 for another year of fine music programming**

Sonoma County is truly blessed to have this radio station, playing and supporting our kind of music. In particular, special notice should be taken of Bob Sala with “KRUSH Uncorked” on Sunday mornings, “KRUSH Americana” with Bill Bowker on Monday evenings, Dallas Dobro on Saturday and Sunday afternoon and the whole gang, you all do so much! THANKS!

### **The Last Record Store**

1899-A Mendocino Avenue  
Santa Rosa, CA 95401



Phone (707) 525-1963  
[WWW.THE-LAST-RECORD-STORE.COM](http://WWW.THE-LAST-RECORD-STORE.COM)

**A proud sponsor of the  
Folk Society...  
You too can help  
support this newsletter  
by placing an ad here!**

**For details:  
[stevehobluegrass@yahoo.com](mailto:stevehobluegrass@yahoo.com)**

## Ukulele Undercurrents Tidbits

It's my goal to try to get news of events out BEFORE they happen so you can attend them. But distracted by the purchase of a new uke and the holiday season, I can only report on a lively concert and workshops by Cyril Pahinui and Jake Shimabukuro, an incredible deal at only \$10 for the matinee, what a treat of Aloha in our chilly December. Having these great Hawaiian musicians over here is evidence that the uke is alive and well in the Bay Area.

### Economic Stimulus!

If you're going to help the economy by spending that money you got for Christmas, there are any number of stores in the area that carry ukes. Zone Music has Kalas and Makalas in stock. Ask for Ben Burleigh.

Tall Toad in Petaluma has a selection of Kalas, Martins, vintage ukes and that Martin 5K, if Santa was really generous.

Stanroy in Santa Rosa has a line of "B" stock along with assorted first line Kalas.

### Birds of a Feather

Uke clubs are meeting all over the Bay Area.

The most prominent is the Santa Cruz Ukulele Club. They hosted Cyril Pahinui in December and have performers and workshops at their monthly meetings.

The Petalukes celebrate their first birthday in December and host a spirited play-along in Petaluma. Links

Zone music

[www.zonemusic.com](http://www.zonemusic.com)

Tall Toad music

[www.talltoadmusic.com](http://www.talltoadmusic.com)

Stanroy

[www.stanroy.com](http://www.stanroy.com)

Petaluke

<http://launch.groups.yahoo.com/group/Petaluke/>

Santa Cruz Ukulele Club

[www.ukuleleclub.com](http://www.ukuleleclub.com)



## From Women's Hearts and Hands Guitar Camp Mendocino, CA

**January 16 - 19, 2009  
(MLK Weekend)**

Contact: Kay Eskenazi, 707/869-9642  
P.O. Box 1699, Forestville, CA 95436

Excellent, caring guitar instruction by and for women in a supportive, beautiful environment!

Enjoy superb guitar instruction, play in song circles, perform your songs, revel in guitar mania, enjoy nature's beauty, eat delicious food, relax! We help Beginners learn easy chords, picking and strumming patterns, and simple songs. For Intermediate and Advanced players, we teach many techniques and theory to help develop your music.

Folk, Fingerpicking, Swing/Jazz, Blues, Celtic, Song Writing, Bossa Nova, Chord/Melody, Music Theory, Performance Support and Technique, How To Buy A Used Guitar.

[GuitarCamp@WomensHeartsAndHands.com](mailto:GuitarCamp@WomensHeartsAndHands.com)  
[www.WomensHeartsAndHands.com](http://www.WomensHeartsAndHands.com)

Visit our booth at the  
Cloverdale Fiddle Contest!

Many Contest Specials!!

FIDDLES & ACCESSORIES  
MUSIC ♦ GIFTS  
GUITARS, ACCESSORIES, & MORE



**Skelton's  
Music**

We specialize in Violins & Fiddles  
Sales ♦ Rentals ♦ Supplies ♦ Repairs ♦ Instruction

707-279-4336  
Kelseyville ♦ [skeltonmusic@jps.net](mailto:skeltonmusic@jps.net)

### FOLK NOTES

Published bi-monthly, 6 times a year  
Sonoma County Folk Society  
P O Box 9659 Santa Rosa CA 95405-9659  
For information, call 707-542-3798  
<http://www.socofoso.com>



# Other Upcoming events...

## **22nd Annual Blythe Bluegrass Festival Jan 16,17,18 2009**

Featuring...Rhonda Vincent & The Rage- Dailey and Vincent,  
Danny Paisley & The Southern Grass - Cedar Hill - IIIrd  
Generation Bluegrass Band - The Martins - Sawmill Road,  
The Burnett Family - Just For Fun -  
Contact Jim Shipley, [www.blythebluegrass@yahoo.com](mailto:www.blythebluegrass@yahoo.com)  
or 760-922-8166

## **San Francisco Bluegrass & Old Time Festival Celebrate Our 10th Anniversary! February 5-14, 2009**

Info: Tom Lucas, email: [info@sfrbluegrass.org](mailto:info@sfrbluegrass.org)  
James King, John Reischman, Claire Lynch, Jackstraw, Laurie  
Lewis, Kathy Kallick, Crooked Jades, Del Williams, Cliff  
Wagner & The Old No. 7, Stairwell Sisters, Water Tower  
String Band and many more!

## **Sebastopol Center for the Arts presents GILBERT AND SULLIVAN SING ALONG**

This annual "Gilbert & Sullivan Sing-Along" includes  
members of the San Francisco LAMPLIGHTERS  
joining us for this gala evening event!  
One Performance only  
Saturday, January 17, 7:00 p.m.  
Sebastopol Center for the Arts Music Studio,  
6780 Depot Street  
For details and tickets, 829-4797

## **The Freight & Salvage Coffee House, 1111 Addison St Berkeley CA**

January  
8th, The Peter Rowen Bluegrass Band  
15th, Rhonda Vincent and the Rage  
25th, Cheap Suit Serenaders  
February  
1st, The Bee Eaters  
14th, John Reischman & the Jaybirds  
24th, Mike Marshall  
w/ Choro Famoso and Big Trio  
25th, The Dillards  
28th, Ramblin' Jack Elliott  
For details, 510-548-1761 or [www.freightandsalvage.org](http://www.freightandsalvage.org)

## **More great concerts... The John Jorgenson Quintet Thursday, January 22, 8:00 p.m.**

Petaluma Church Concerts  
at First Church of Christ Scientist  
522 B St (corner of B & 6th)  
Downtown Petaluma  
Tickets: \$20 door, \$18 advance at Brown Paper Tickets  
For details, [www.petalumachurchconcerts.com](http://www.petalumachurchconcerts.com)  
Presented by: Lance Walker, [eclecticstage@yahoo.com](mailto:eclecticstage@yahoo.com)

## **The Claire Lynch Band Friday February 6th, 8:00pm**

They're coming to Northern California in early February  
and are we lucky to have them!  
In case you didn't know, the Claire Lynch Band is high on  
the bluegrass world's A-List and well worth the drive to  
town!  
Youth Annex Building  
425 Morris St., Sebastopol  
(next to Sebastopol Community Center)  
Tickets: \$20 in advance, \$18 for Socofoso members,  
\$22 at the door  
Details & reservations, Kevin @ 707-824-1858 or  
[krussellmft@aol.com](mailto:krussellmft@aol.com)

---

## **WinterGrass**

**February 19 - 22  
Tacoma WA**



The SteelDrivers - Darrell Scott - Laurie Lewis and the  
Right Hands - Tony Trischka Territory -  
Michael Cleveland and Flamekeeper - Mike Marshall &  
Big Trio with Alex Hargreaves & Paul Kowert --  
Blue Highway - Adrienne Young and the Old Faithful-  
Alison Brown Quartet with Joe Craven - 3 Ring Circle-  
The Isaacs - Missy Raines & the New Hip --  
The McCoury Boys - Choro Famoso - The Paperboys-  
Bearfoot - The Bee Eaters - Hot Buttered Rum-  
Scythian - Monroe Crossing - Cody Bryant and The  
Riders of the Purple Sage - Widow Maker - Dewgrass-  
Urban Monroes - Belle Monroe and Her Brewglass Boys-  
Molly & Tenbrooks - The Tallboys -  
Martin Stevens & Molly Adkins  
The Acoustic Sound Office:  
PO Box 2356  
Tacoma WA 98401 (253) 428-8056  
[www.acousticssound.org](http://www.acousticssound.org)

# Acoustic Music Jams :

**it's always fun to make your own music!**



• **THE BLACK ROSE PUB**

(formally the Rose Pub)

2074 Armory Drive, Santa Rosa.

All JAM SESSIONS are now being conducted on Wednesday nights, starting at 8:00.

◇ French and European jam, first Wednesday

◇ Slow Celtic jam, second Wednesday

◇ Traditional Irish jam, third Wednesday

◇ Old Timey Bluegrass jam, fourth Wednesday

For more details, please call Don Coffin at: 707-995-0658

• **THE REDWOOD CAFE**

8240 Old Redwood Hwy, Cotati

◇ The Celtic Sessions, led by Janette Duncan and Roxanne Oliva

Second Sunday of the month from 4 to 6 pm.

For details call: 585-3138

• **MAIN ST. STATION RESTAURANT**

16280 Main, Guerneville

◇ Slow Celtic Sessions

1st and 3rd Wednesdays, 7 to 9 PM,

For details call: 869-0501

• **COFFEE CATZ**

6761 Sebastopol Ave, Sebastopol,

On Hwy 12 at the Train Station, east end of town.

Check it out every Saturday afternoon from 2 to 5 pm.

Everyone is welcome at this CBA hosted event!

Mark Hogan is a great host.

◇ Old-time, bluegrass, old country.

For more information, contact Mark Hogan at:

hogiemoon@comcast.net or call 829-8012

• **ACE IN THE HOLE CIDER PUB**

Corner of Hwy 116 at Graton Road.

◇ Open Mic on Monday night, hosted by Steve Wharton

For more information call 829-1223

• **MURPHY'S IRISH PUB**

464 First St Sonoma

◇ First Sunday of the month, celtic jam

For details call 935-0660

• **GOSPEL MUSIC JAM**

Bluegrass & Old Time Music

The 4th Sunday of each month, 2:00 p.m. - 5:00 pm.

Sebastopol Christian Church, the corner of Bodega

Avenue and Jewell Street across from fire station and Ives

Park. Hosted by Mike Davitz, mikedavitz@comcast.net or

(707) 527-9637 for details. Bring acoustic instruments

and your favorite Gospel songs to sing.

## Singer's Circle...

◇ Meets 4th Friday of most months. For information call Dennis Drury at 829-0883

## Dance Dance Dance...

• **DANCE AWAY**

◇ Contra and English dancing every weekend! Live music, lessons and callers. For detailed info contact: NBCDS

Dance Line (707) 527-9794 or

www.nbcds.org or email: info@nbcds.org

• **APPLE TREE MORRIS**

◇ Weekly in Sebastopol. Information: 829-3478 or kalia@sbcglobal.net



## Sonoma County Folk Society Membership Application

Fill out and return with annual dues: - \$10.00 Individual - \$15.00 Family Make checks payable to SoCoFoSo.

Mail to: SoCoFoSo, PO Box 9659 Santa Rosa CA 95405

(Please print)

Name

Address

City

State

ZIP

Phone

EMail

comments:

## On the Air KRCB:



### Our own NPR Station at 91.1 or 90.9 FM

Great programs, some of particular interest to folkies...

◇ Mondays: 8:00 to 10:00 PM

• **Your Average Abalone**, hosted by Johnny Bazzano, 1st and 3rd.

• **The Fiddling Zone**, hosted by Gus Garelick, Old Time fiddling, Bluegrass, Cajun, Swing, Klezmer and more 2nd and 4th.

◇ Tuesdays: 10:00 to Midnight

• **Crossing Borders**, World music

◇ Thursdays: 8:00 to 10:00 PM

• **Freight Train Boogie**, hosted by Bill Frater, Roots, Country, Folk, Blues, Rock etc.

◇ Saturdays: Noon to 1:00 PM

• **Thistle and Shamrock**, Celtic music

◇ Saturdays 1:00 to 5:00 PM

• **Our Roots Are Showing**, hosted by (*alternating hosts*) Robin Pressman and Steve DeLap. Folk, Acoustic, Singer-songwriter, Blues, Bluegrass

## On the Air KRSH:

95.9FM

◇ "Krush Uncorked" Sundays 8-11 AM. Singer-songwriter acoustic and unplugged music with Bob Sala



**Sonoma County Folk Society**  
**PO Box 9659**  
**Santa Rosa CA 95405-9659**

• **NEXT DEADLINE FOR ARTICLES** •  
February 10th  
To Steve: [stevehobluegrass@yahoo.com](mailto:stevehobluegrass@yahoo.com)



"Krush Americana" NOW on Monday evenings 7:00 to 10:00 PM. Old n' new twang, Country, Americana and Roots Music...  
with Bill Bowker

## Lessons • Lessons • Lessons

◇ **Fiddle Lessons:** Contra and Square dance styles, Celtic, Scandia and other International styles by ear and reading with music theory, Janette Duncan 707-570-2745

◇ Lessons in guitar, old time banjo, piano and beginning accordion. With Ingrid Noyes, in Marshall, on the shores of Tomales Bay. For details: 415-663-1342 or e-mail [ingrid10@sonic.net](mailto:ingrid10@sonic.net)

◇ Kay Eskenazi loves to teach guitar, Folk, Blues, Jazz, Bossa Nova, Fingerstyle, Celtic and Classical styles. 707/869-9642 [service@WomensHeartsAndHands.com](mailto:service@WomensHeartsAndHands.com)

◇ **Music lessons at your location:** note reading, theory, piano instruction for all ages. Laurie 707-869-9230

◇ **Steve Wharton teaches Bluegrass:** banjo, Old Time banjo, Dulcimer, and Autoharp 707-887-2518.

◇ **Learn to play Polish fiddle**  
Nanette Fynan 707-569-0565

◇ **Play the String Bass:** lessons in Sebastopol  
Bill Amatneek 707-824-8084



Printed on recycled paper